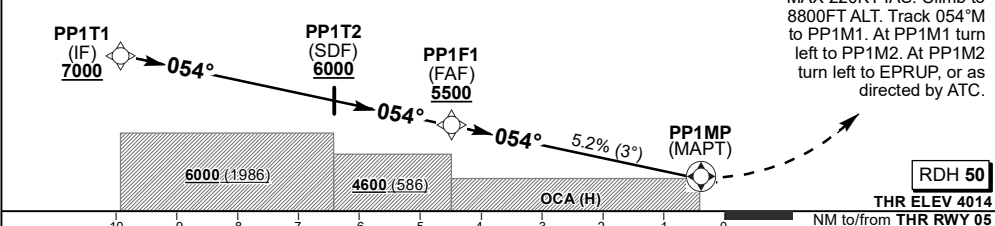


DIST (NM) to THR	4.5	4	3	2	1	0.4		
ADVISORY ALT (HGT)	5500 (1486)	5340 (1326)	5020 (1006)	4710 (696)	4390 (376)	4200 (186)		

TRANSITION ALT 9000
TRANSITION LEVEL ATC



MIN TEMP: -1°C / MAX TEMP: 62°C

		OCA (H)	A	B	C	D	GS	KT	80	100	120	140	160	180	
Straight-in Approach	LNAV	5.0% MISSED APCH GRADIENT		4600 (586)				PP1F1 to THR	M:S	3:23	2:42	2:15	1:56	1:41	1:30
		2.5% MISSED APCH GRADIENT		6100 (2086)				Rate of descent	FPM	425	531	637	743	849	955
	LNAV/VNAV	4.8% MISSED APCH GRADIENT		4460 (446)				NOTE:							
		2.5% MISSED APCH GRADIENT		5950 (1936)				1. MAPT 0.4NM prior THR - LNAV only. 2. LNAV RoD equivalent to 5.2%. 3. Remote Altimeter Setting Source not permitted for VNAV Ops. 4. BaroVNAV operations not authorised below -1°C. 5. MAX VPA 3.5°C, Temperature +62°C.							
RVR			1500	1500	1800	2000									
ALS OUT			1500	1500	2000	2000									
Circling			4690(614)	4770(694)	5280(1204)										